

## Advanced Feature: Excel Connectivity

### Overview:

Laser can connect to Excel and feed quotes into Excel.

Laser can receive orders from Excel.

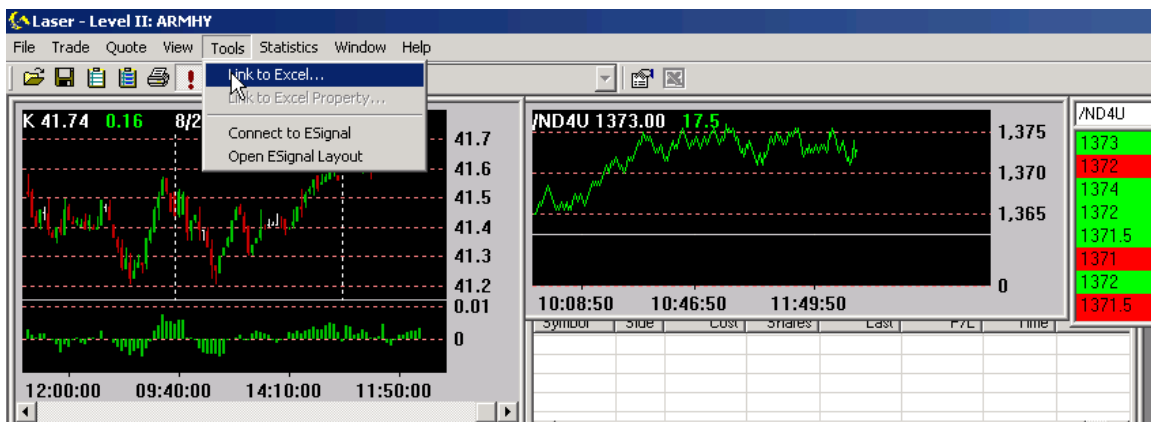
Excel can receive position data.

### Connecting to Excel:

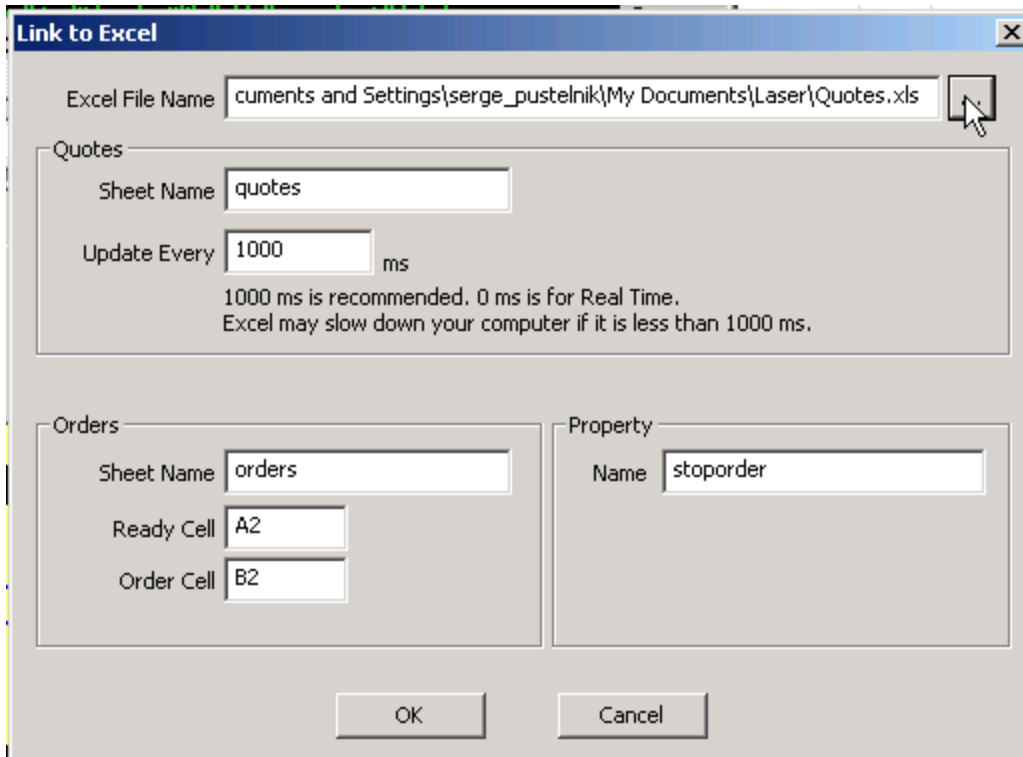
**In Order to Connect to Excel you need to have a desired spreadsheet open in Excel.  
You may either create your own, or download a sample spreadsheet found on our website:**

**When an instance of Excel with the desired spreadsheet is open:**

Please click on Tools -> Connect to Excel



Upon Clicking: The following Window Appears:



Please browse for the desired spreadsheet by clicking the button by Excel File Name. Alternatively, you can type the direct path into the text bar.

**Under Quotes:**

The Spreadsheet that you will use must have at least two sheets. When creating a new one from scratch, the common names are Sheet1 and Sheet2. If using the sample spreadsheet from our website, the sheets are pre-named to be **Quotes** and **Orders**.

**Sheet Name: The name of the sheet (within the workbook) that will receive quotes. For the column headings please see the sample sheet found on our website.**

**Update Every:**

The default is set to update every 1000 milliseconds (1 second). For real-time update enter 0. **WARNING: EXCEL IS VERY SLOW IN HANDLING REAL-TIME DATA. YOUR COMPUTER MAY FREEZE IF IT CANNOT HANDLE THE DATA FLOW. 1000 MS IS RECOMMENDED FOR MOST SET-UPS**

**Under Orders:**

**Sheet Name:**

Sheet Name: The name of the sheet (within the workbook) that will send-out Orders  
For the column headings please see the sample sheet found on our website.

**Ready-Cell:**

The cell that tells Laser to place the order found in the **order cell**. If ready cell's value is **YES** and order will be sent from the **order cell**  
You are able to change the cell location for this cell.

**Order-Cell:**

This cell must contain the string of the order that will be placed if the **Ready Cell** is **YES**.  
You are able to change the cell location for this cell.

**NOTE:**

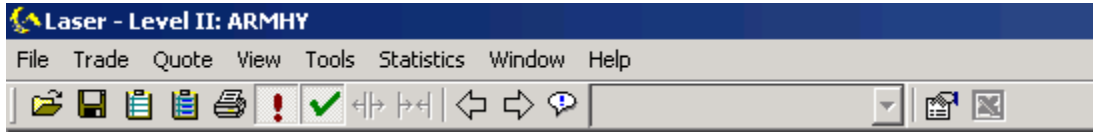
*In order for Laser to send orders from Excel, a Command Center must be open on Laser.  
For syntax, please type in HELP into the Command Center.*



**Under Property:**

**Enter the name of the Macro you wish to link to Excel**

**You can also run Macros directly from Laser.  
Laser has an Excel Button found here:**



It is the last one on the right. It will become enabled if the correct property is set to an existing Macro.

For example, if you create a macro and call it Macro1, then property setting should be Macro1. Once Laser is linked to Excel, you can press the excel button in Laser and it will call that Macro.

**For support on how to write Macros in Excel, please consult Microsoft Excel References. Linking to Excel is provided on as-is basis. Users should be highly familiarized with Excel to use these features since they could send live orders into the market. Traders must understand that they will be responsible for all orders sent from Excel.**